

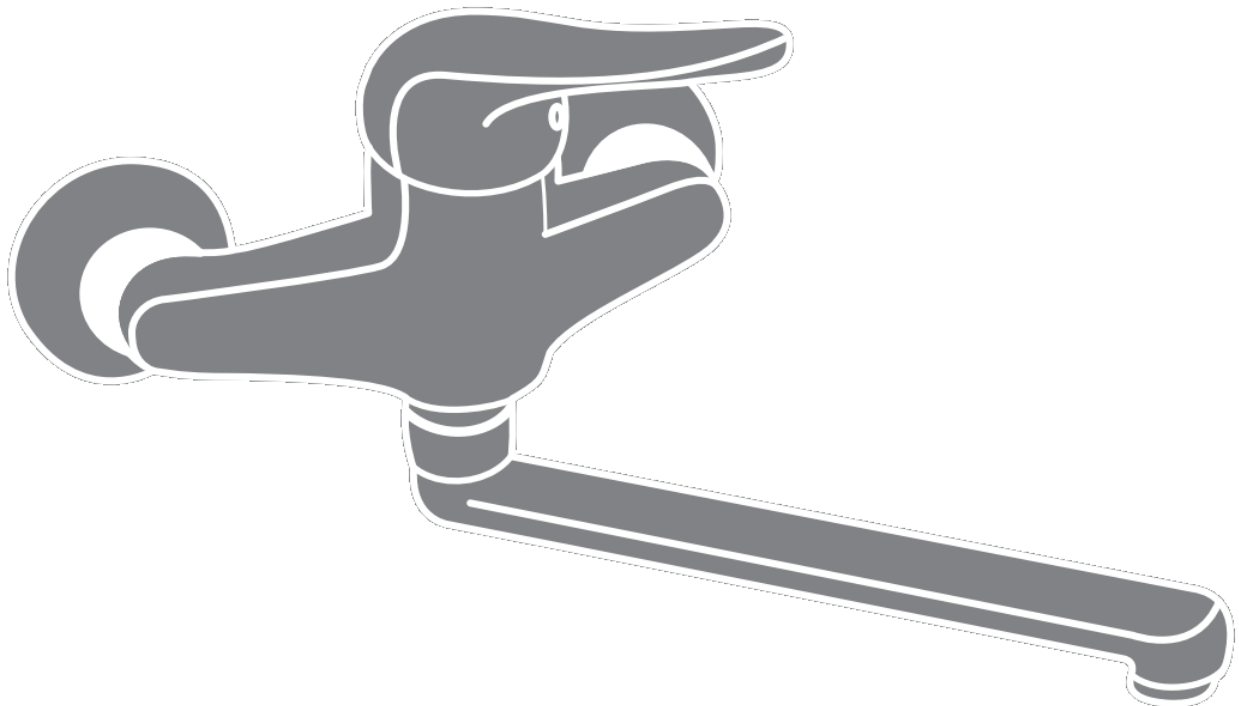


CORNAT P6 Punto Wall-Mounted Single-Lever Sink Mixer Instruction Manual

[Home](#) » [CORNAT](#) » CORNAT P6 Punto Wall-Mounted Single-Lever Sink Mixer Instruction Manual 



Instruction-manual / Warranty terms



The illustrations serve as visual depictions.
Product changes are possible. Subject to change.

Contents

1 Instruction-manual:

2 Operating conditions:

3 Care instructions:

4 Warranty terms of Conmetall Meister GmbH

5 Documents / Resources

5.1 References

Instruction-manual:

Please note the following points before installation:

- Installation should only be performed by experienced technicians under the consideration of DIN1988 and VOB.
- Before starting the installation, please stop the water supply (ideally close the main valve at the water meter).
- Please make sure that during assembly all seals fit properly (Always check – water damage possible)
- The fitting is suitable for use in private households and only in rooms with a temperature above 0 ° C. If there are a risk of frost, the water supply should be interrupted and the valve must be completely emptied.
- Always before the first use and when a fitting has not been used for a prolonged period, you should let rinse out a larger amount of water (water stagnation) before drinking water is taken!

– Important MOUNTING Note:

The flexible connection hoses may only be hand screwed into the fitting. Do not use under any circumstances tools like pliers or wrenches.

Operating conditions:

Hot water temperature	max. 80 ° Celsius
Test pressure	max. 16 bar
Operating pressure	max. 10 bar
Holding pressure for shower conversion	min. 0.8 bar

Care instructions:

Sanitary taps require special care. Please note the following information:

Chrome surfaces:

are sensitive for chemicals, acid-containing cleaning supplies and all kinds of abrasives.

Occasionally clean with soapy water, using a soft cloth. Remove lime deposits with household vinegar.

Gilded surfaces:

are particularly sensitive to abrasives.

Clean as chrome surfaces. Light polishing with a silver polishing cloth brightens.

Colored surfaces:

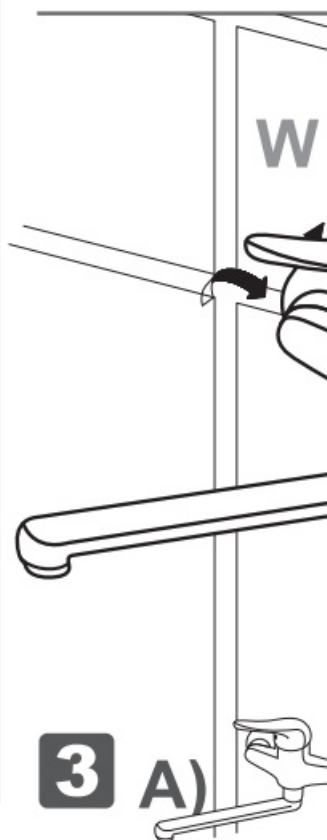
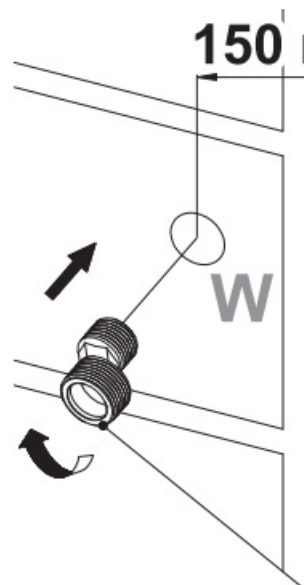
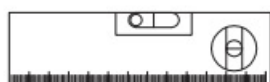
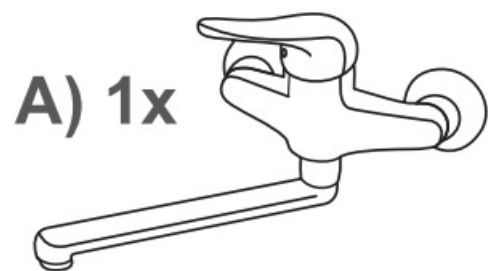
The surfaces of these taps are sealed with a special baking varnish. Do not clean with abrasive, corrosive or cleaners containing alcohol.

Clean only with cold water and a soft cloth or leather.

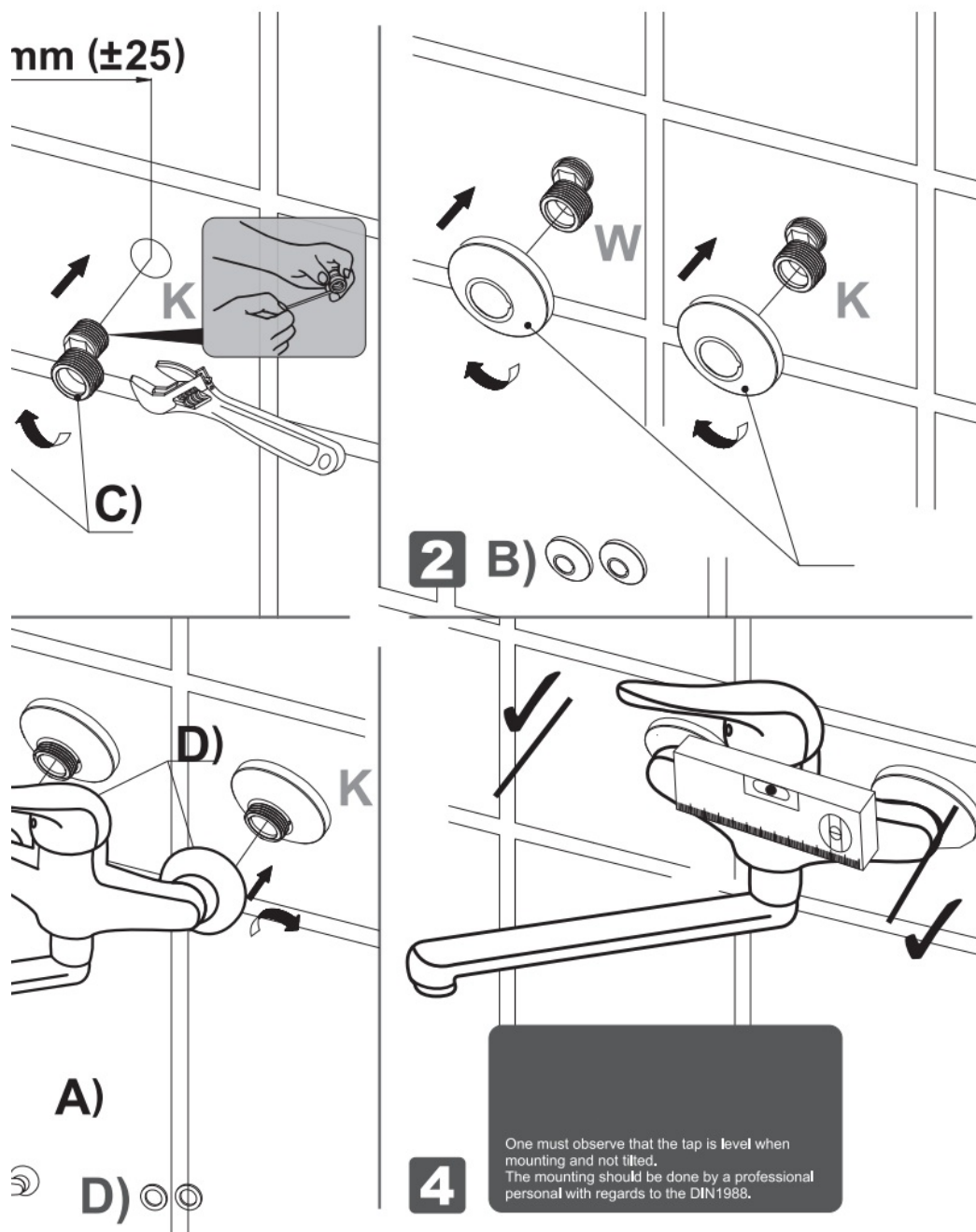
Surface damages can be expected especially in gilded and colored fittings for inobservance of care instructions.

Warranty claims will not be asserted.

Hot water



The illustrations serve as visual depictions.
Product changes are possible. Subject to change.



Warranty terms of Conmetall Meister GmbH

We guarantee the proper functioning of our products for a period, which is shown on a Guarantee Logo applied on the products and / or the outer packaging. If you think the product is defect, please check in advance whether other reasons such as mishandling could be the cause.

In case of warranty, please contact first the trade partner from whom you purchased the product.

This will contact us, the Conmetall Meister GmbH in doubt.

Please share exactly as possible which error / failure / damage / lack of article is existent.

I. beginning of Conmetall Meister guarantee is the date of purchase of the article.

II. Proof of Conmetall Meister guarantee is the sales receipt / invoice.

III. Subject of Conmetall Meister guarantee is the flawless function of the article.

IV. The Conmetall Meister guarantee logo shows the duration of Conmetall Meister warranty.

Defects must be reported during the period of warranty immediately after occurrence. The rejected article must be stored. For consequential damages the company Conmetall Meister is given the possibility, if appropriate, to assess the damage and the damage site case within 30 days prior to the repair.

The following cases are excluded:

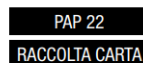
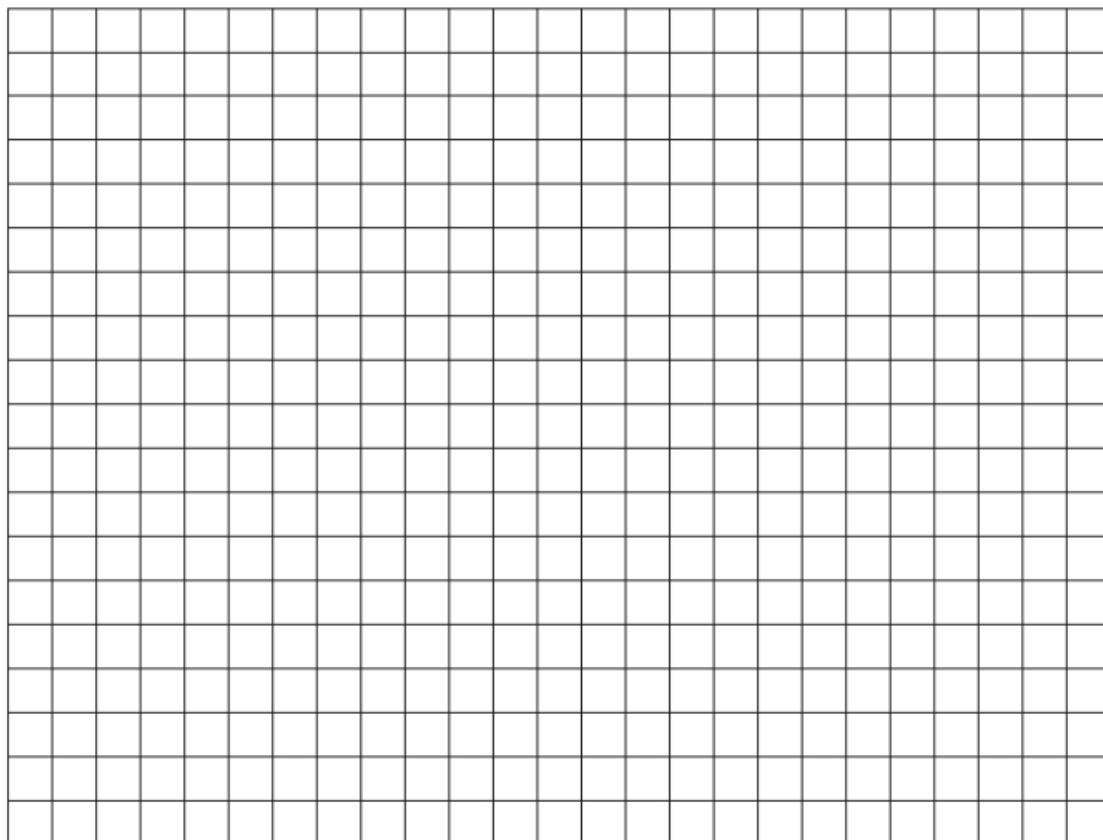
1. Typical wear and / or abrasion.
2. Improper installation and / or commissioning.
3. Improper handling and / or use.
4. Tampering and / or repair.

Regardless of the Conmetall Meister guarantee, which is applied to the products and / or the outer packaging, the instructions must be observed and the instruction manual must be read carefully and stored.

The legal warranty rights exist irrespective of the Conmetall Meister guarantee which is printed on the product and / or the outer packaging and remain in an eventual exclusion of Conmetall Meister guarantee.

The Conmetall Meister guarantee granted by:

Conmetall Meister GmbH, Hafenstraße 26, 29223 Celle.





Sealing element

YA

Conmetall Meister GmbH

• Hafenstraße 26


• 29223 Celle

• GERMANY

• www.conmetallmeister.de

09/2022

Documents / Resources

	<p>CORNAT P6 Punto Wall-Mounted Single-Lever Sink Mixer [pdf] Instruction Manual P6 Punto Wall-Mounted Single-Lever Sink Mixer, P6, Punto Wall-Mounted Single-Lever Sink Mixer, Wall-Mounted Single-Lever Sink Mixer, Single-Lever Sink Mixer, Lever Sink Mixer, Sink Mixer, Mixer</p>
-----------------------------------------------------------------------------------	------------------------------------------------------------------------------------------------------------------------------------------------------------------------------------------------------------------------------------------------------------------------------------------------------------

References

-  [Conmetall Meister - Ihr Lieferant rund um Haus & Garten](#)